



THE BRITISH SCHOOL  
OF BEIJING, SANLITUN  
A NORD ANGLIA EDUCATION SCHOOL

# SCHOOL UNIFORM GUIDE

# EARLY YEARS UNIFORM

## SUMMER

Navy polo shirt

Navy shorts



## WINTER

Teal polo shirt  
(long-sleeved)

Navy tracksuit top

Navy tracksuit trousers



No PE uniform required for Early Years children.

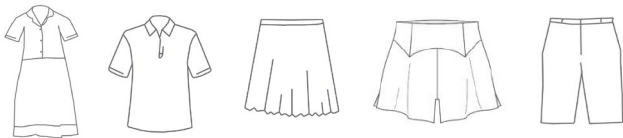


# PRIMARY - SUMMER UNIFORM

Teal polo shirt

Grey shorts

Skirt, skort or  
summer dress



# PRIMARY - WINTER UNIFORM

Blue tie

Blazer

White shirt/blouse

Navy sweater/cardigan

Grey trousers (Y1 - Y6)

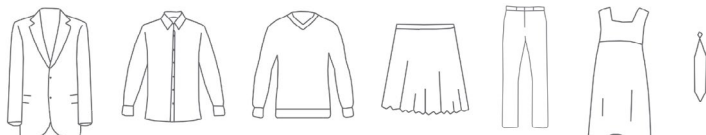
Pinafore (Y1 - Y3)

Skirt (Y4 - Y6)



## TIPS FOR WASHING MERINO

1. Turn the garment inside out.
2. Machine-wash on gentle cycle in cool water.
3. Use mild soap, avoid using bleach or fabric softener.
4. Air-dry by laying flat, avoid using dryer.



# PRIMARY - PE KIT

## SUMMER

T-shirt

Shorts



## WINTER

Tracksuit top

Tracksuit trousers

Hoody or jacket



# OTHER ITEMS AVAILABLE FROM OUR SCHOOL UNIFORM SHOP

## COMPULSORY

Homework Bag (Year 1 to Year 6)

Early Years Backpack (Tadpoles to Reception)



## OPTIONAL

Summer hat

Swimming bag

PE hat

Swimming costume

Sports socks

Flat black leather shoes

(velcro straps, slip-on, shoe laces are all fine)



# FOOTWEAR

## AVAILABLE FROM THE SCHOOL UNIFORM SHOP:

Flat black leather shoes for Primary girls and boys are now available from the School Uniform Shop, though these may be purchased elsewhere if you prefer. Velcro straps, slip-on and shoe laces are all fine.

The following items are not available from our uniform shop. Good-quality children's shoes can be difficult to find in Beijing, so we recommend that you bring these with you if you are moving to Beijing from overseas.

## EARLY YEARS

Trainers/sneakers/sandals (Summer)

Trainers/sneakers (Winter)

## PRIMARY PE

Non-marking trainers/sneakers

White ankle socks or BSB sports socks

## PRIMARY BOYS

Black socks

## PRIMARY GIRLS

White ankle socks (Summer)

Black tights (Winter)

Flat black leather boots can be worn with the Winter uniform

# AVAILABLE SIZES

UNIT OF MEASUREMENT: CM

SKIRT	4	6	8	10	12	14	16
	110/56	120/59	130/62	140/65	150/68	160/71	165/74
LENGTH	38.5	41	43.5	46	48.5	51	53.5
WAISTLINE	56	59	62	65	68	71	74
HIPLINE	74	78	82	86	90	94	98

SKORT	90/50	100/53	110/56	120/59	130/62	140/65	150/68	160/71	165/74	170/77	175/80	180/83
LENGTH	24	27	30	33	36	39	42	45	48	51	54	57
WAISTLINE	22	24	26	28	30	32	34	36	38	40	42	44
BOTTOM WIDTH	33	36	38	40	42	44	46	48	50	52	54	56

PINAFORE	2	4	6	8	10	12	14	16	18
	100/56	110/60	120/64	130/68	140/72	150/76	160/80	165/84	170/88
LENGTH	46	53	60	67	74	81	85	89	93
SHOULDER LENGTH	20	21	22	23	24	25	26	27	28
CHEST LENGTH	29	31	33	35	37	39	41	43	45
WAISTLINE	28	30	32	34	36	38	40	42	44
BOTTOM WIDTH	55	57	59	61	63	65	67	69	71

TROUSERS	2	4	6	8	10	12	14	16
	100/53	110/56	120/59	130/62	140/65	150/68	160/71	165/74
LENGTH	56	63	70	77	84	91	98	105
WAISTLINE	45	48	51	54	57	60	63	66
HIPLINE	72	76	80	84	88	92	96	100



# CARING FOR SCHOOL UNIFORM

We recommend that uniforms are hand washed or machine washed, inside out, in cold water with a simple laundry detergent and fabric softener and allowed to hang/air dry.

Washing your garment inside out, before you wear it for the first time, will help to reduce any pilling/bobbling as it will remove any excess fibres before they start to rub together. Do read and follow the instructions carefully.

Close zips, open buttons and make sure cuffs and collars are flattened and straight. This helps avoid snagging in the wash.

Washing inside out can help reduce pilling/bobbling and wash similar items together. Always wash knitwear inside out.

Wash at 30 degrees. Increase to 40 degrees in the case of stubborn stains, but never any higher. A hot or very hot wash (at 50°C upwards) can cause school uniform to shrink.

Avoid placing garments on radiators to dry or over direct heat sources. School uniform items are manufactured with 'easy care' fabric, shake them gently after washing and hang them to air dry. Dry knitwear flat and avoid ironing.

Only tumble dry if the care label states this and avoid if possible. The heat from the tumble dryer can cause pilling/bobbling and shrinkage.

Blazers can be washed on a cool temperature with other dark items or dry cleaned. Double check the care label in case the garment needs any special laundry attention. Empty all the pockets and wash on a cool cycle. Pull the blazer into shape before you hang up to air dry.

# NOTES

School uniform is compulsory attire for all students attending the school. Uniforms can be purchased from the School Uniform Shop located at the Primary Building. Students are expected to arrive at school every day in clean clothes, worn in a tidy manner. Official BSB Sanlitun uniforms can only be purchased from the School Uniform Shop. Other items (such as footwear and socks) can be purchased elsewhere.

**It is possible to have an item of uniform tailor-made, if a size is unavailable. Customisation of School Uniform usually takes 4 weeks. Swimming costumes cannot be customised/tailor-made.**

At the beginning of the school year, students should attend school wearing Summer uniform. Winter uniform is usually worn from mid-October until the end of March, the school will advise on the exact date depending on weather. These days may change at the discretion of the Principal.

All clothes worn to school (uniform and non-uniform items) should be clearly labelled with the child's name. Lost, un-named clothing and bags are placed in Lost Property. Uncollected items are donated to charity at the end of each school year.

On PE days (two days a week), Year 1 to 6 students should come to school wearing PE kit.

## PLEASE NOTE:

- Skirts should be of an appropriate length
- Hair accessories should be kept to a minimum and where possible should be in line with the school colours
- Hair below shoulder length must be tied back
- No jewellery except sleepers or studs in ears
- No make-up, nail varnish, extreme hairstyles or colour

## SKIRT

UNIT OF MEASUREMENT: CM

PARTS \ SIZE	4	6	8	10	12	14	16
	110/56	120/59	130/62	140/65	150/68	160/71	165/74
LENGTH	38.5	41	43.5	46	48.5	51	53.5
WAISTLINE	56	59	62	65	68	71	74
HIPLINE	74	78	82	86	90	94	98

## SKORT

UNIT OF MEASUREMENT: CM

PARTS \ SIZE	90/50	100/53	110/56	120/59	130/62	140/65	150/68	160/71	165/74	170/77	175/80	180/83
	LENGTH	24	27	30	33	36	39	42	45	48	51	54
WAISTLINE	22	24	26	28	30	32	34	36	38	40	42	44
BOTTOM WIDTH	33	36	38	40	42	44	46	48	50	52	54	56

## PINAFORE

UNIT OF MEASUREMENT: CM

PARTS \ SIZE	2	4	6	8	10	12	14	16	18
	100/56	110/60	120/64	130/68	140/72	150/76	160/80	165/84	170/88
LENGTH	46	53	60	67	74	81	85	89	93
SHOULDER LENGTH	20	21	22	23	24	25	26	27	28
CHEST LENGTH	29	31	33	35	37	39	41	43	45
WAISTLINE	28	30	32	34	36	38	40	42	44
BOTTOM WIDTH	55	57	59	61	63	65	67	69	71

## TROUSERS

UNIT OF MEASUREMENT: CM

PARTS \ SIZE	2	4	6	8	10	12	14	16
	100/53	110/56	120/59	130/62	140/65	150/68	160/71	165/74
LENGTH	56	63	70	77	84	91	98	105
WAISTLINE	45	48	51	54	57	60	63	66
HIPLINE	72	76	80	84	88	92	96	100